

# North Quay

## Retail Park



### MEDIA SHEET

#### North Quay Retail Park - Peto Way, Lowestoft, Suffolk NR32 2ED

North Quay Retail Park is located on the outskirts of Lowestoft, Suffolk 22 miles South East of Norwich. Having a shopping catchment area of 73,315 split 51% female to 49% male with an average age of 43.

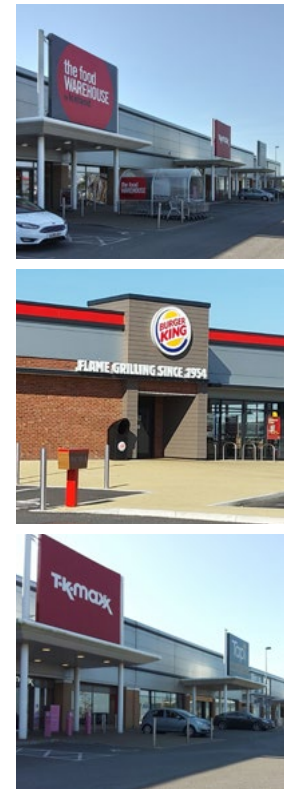
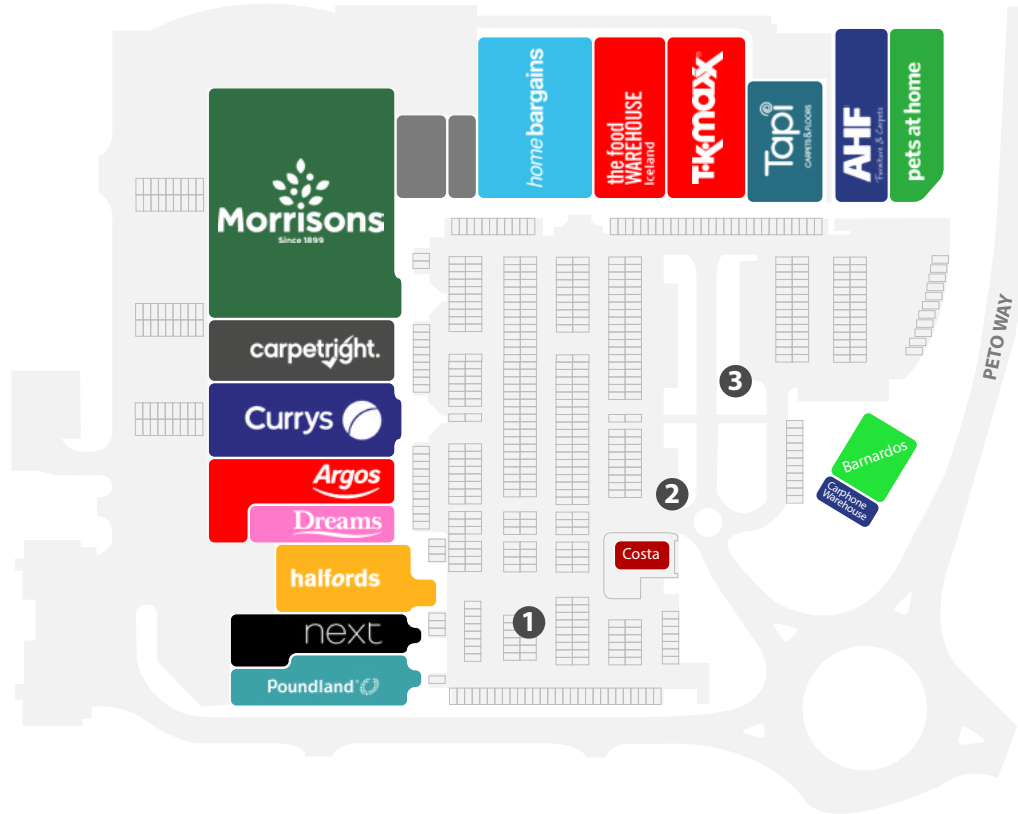
North Quay Retail Park houses 19 retail units including tenants Next, Halfords, Morrisons, Pets at Home, Poundland, AHF Furniture and Costa Coffee. The park totals 187,000 sq ft./ 17,373m<sup>2</sup>.

Ample parking with 678 car park spaces which are free for shoppers.



To book a promotional space at North Quay Retail Park please get in touch.  
Call Access Point on **01704 544999**, email **hello@apuk.net** or visit **www.apuk.net**

# Site Descriptions



**Site 1:**  
Car Parking spaces adjacent to the wide hard standing landscaping and the pedestrian walkway through the scheme.

**Site 2:**  
Car parking spaces with maximum visibility as customers enter the scheme via car.

**Site 3:**  
Car Parking spaces adjacent to large hard standing pedestrian walkways with great visibility to customers.

To book a promotional space at North Quay Retail Park please get in touch.  
Call Access Point on **01704 544999**, email **hello@apuk.net** or visit **www.apuk.net**