

# Cathedral Square Worcester

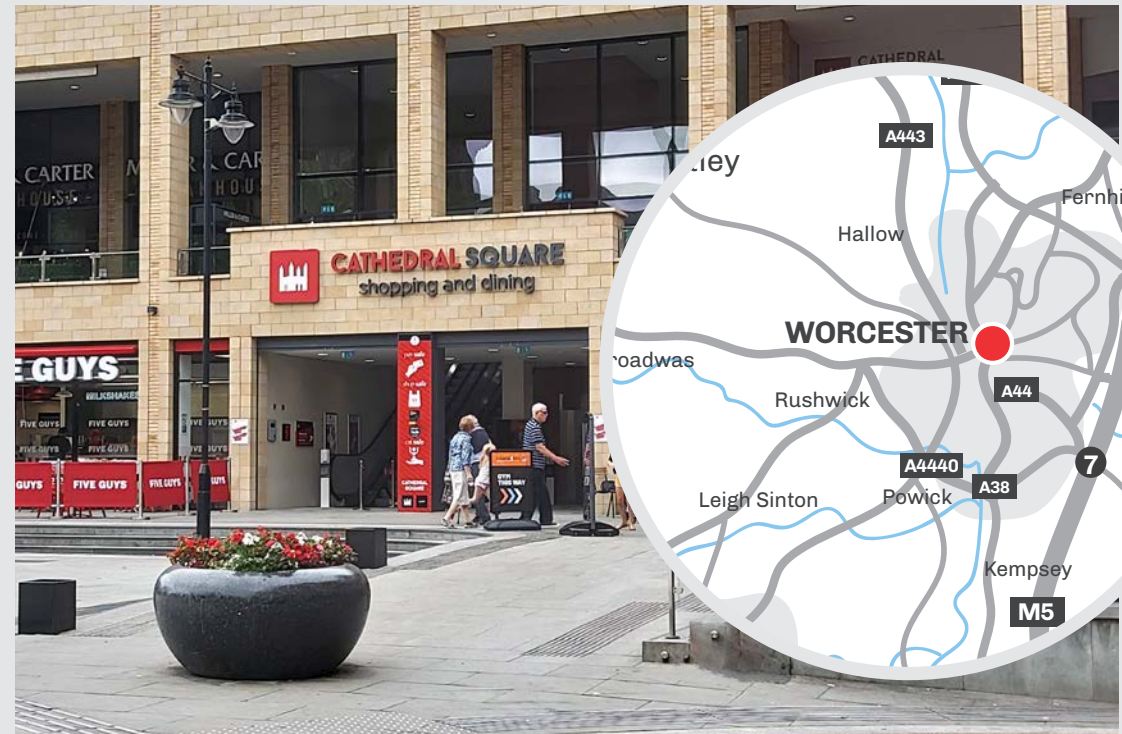
## MEDIA SHEET

### 9a High Street, Worcester, WR1 2QE

Worcester is well serviced by road and rail links being on junction 7 of the M5 and direct rail routes to London and Birmingham. Worcestershire has a population of approximately 583,000 with the city of Worcester having a population of approximately 102,000.

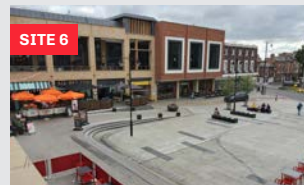
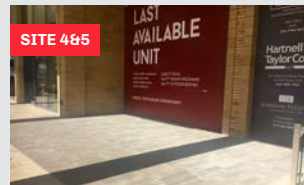
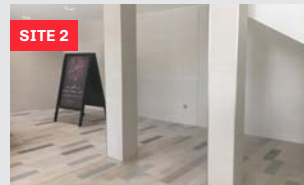
Cathedral Square is a prestigious mixed use shopping development situated at the southern end of the high street. Overlooking a public square used for al fresco dining and events the development has redefined the retail and leisure environment in this Cathedral City.

Cathedral Square extends to approximately 220,000 sq ft with 325 car parking spaces at the nearby NCP. Tenants currently include Ask, All Bar One, Yo Sushi, Wilko, Next and Hotel Chocolat.



To book a promotional space at Cathedral Square please get in touch.  
Call Access Point on **01704 544999**, email [cathedralsquare@apuk.net](mailto:cathedralsquare@apuk.net) or visit [www.apuk.net](http://www.apuk.net)

# Site Descriptions



<b>Site 1:</b>	2nd Floor. 3m x 4m with additional space for seating. Kiosk location for a caterer directly in front of the entrance doors to a large legal call centre and the management suite. Power and access to water is available. Expected operating hours would be 8am – 6pm with the option to open later.
<b>Site 2:</b>	1st Floor. 2m x 6m with reduced head height under the eaves. Kiosk location for a retail/service offer. Power can be made available.
<b>Site 3:</b>	1st Floor. Balcony 3m x 4m. Pop-up trading location on the patio area of the To Let unit ideal for a pop-up trader – access for small trailer is via the service entrance. Suitable for food and non-food retailing.
<b>Site 4 &amp; 5:</b>	Edge of Public Realm. Sampling pop-up locations available. Please ask for information on the event timetable in Cathedral Square to coincide with your campaign for higher footfalls and dwell times.
<b>Site 6:</b>	Cathedral Square Public Realm. Area available on request.

To book a promotional space at Cathedral Square please get in touch.  
Call Access Point on **01704 544999**, email [cathedralsquare@apuk.net](mailto:cathedralsquare@apuk.net) or visit [www.apuk.net](http://www.apuk.net)