

Wavertree Retail Park

MEDIA SHEET

Wavertree Road, Wavertree, Liverpool, L7 5LZ

Wavertree is an area of Liverpool approximately four miles to the south east of the city centre and has a population of over 14,772.

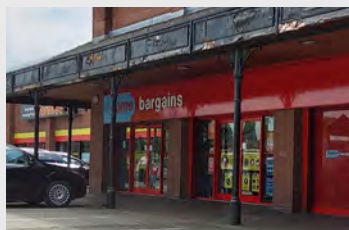
Wavertree Retail Park is located adjacent to Wavertree Shopping Centre and there is access to 355 free car parking spaces.

Key tenants include - Home Bargains, Iceland, Matalan, Pound Stretcher and Gala Bingo.



To book a promotional space at Wavertree Retail Park please get in touch.
Call Access Point on **01704 544999**, email **hello@apuk.net** or visit **www.apuk.net**

Site Descriptions



Site 1:	Overlooking Wavertree Road.
Site 2:	Outside Iceland.
Site 3:	Overlooking Wavertree Road.

To book a promotional space at Wavertree Retail Park please get in touch.
 Call Access Point on **01704 544999**, email **hello@apuk.net** or visit **www.apuk.net**