

Emery Gate Shopping Centre

MEDIA SHEET

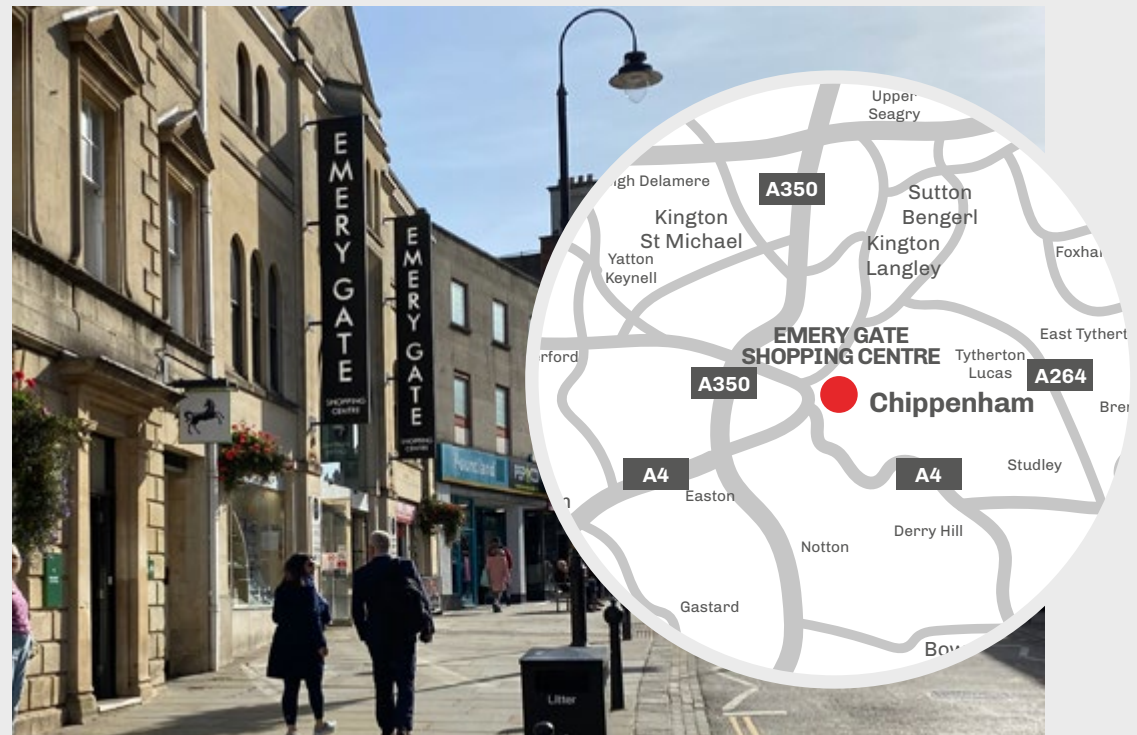
Chippenham, Wiltshire, SN15 3JP

Emery Gate is Chippenham's primary shopping centre and is perfectly positioned on the main high street in the heart of Chippenham town centre.

Chippenham has a population of approximately 45,000, with over 3.4 million visitors to the area annually.

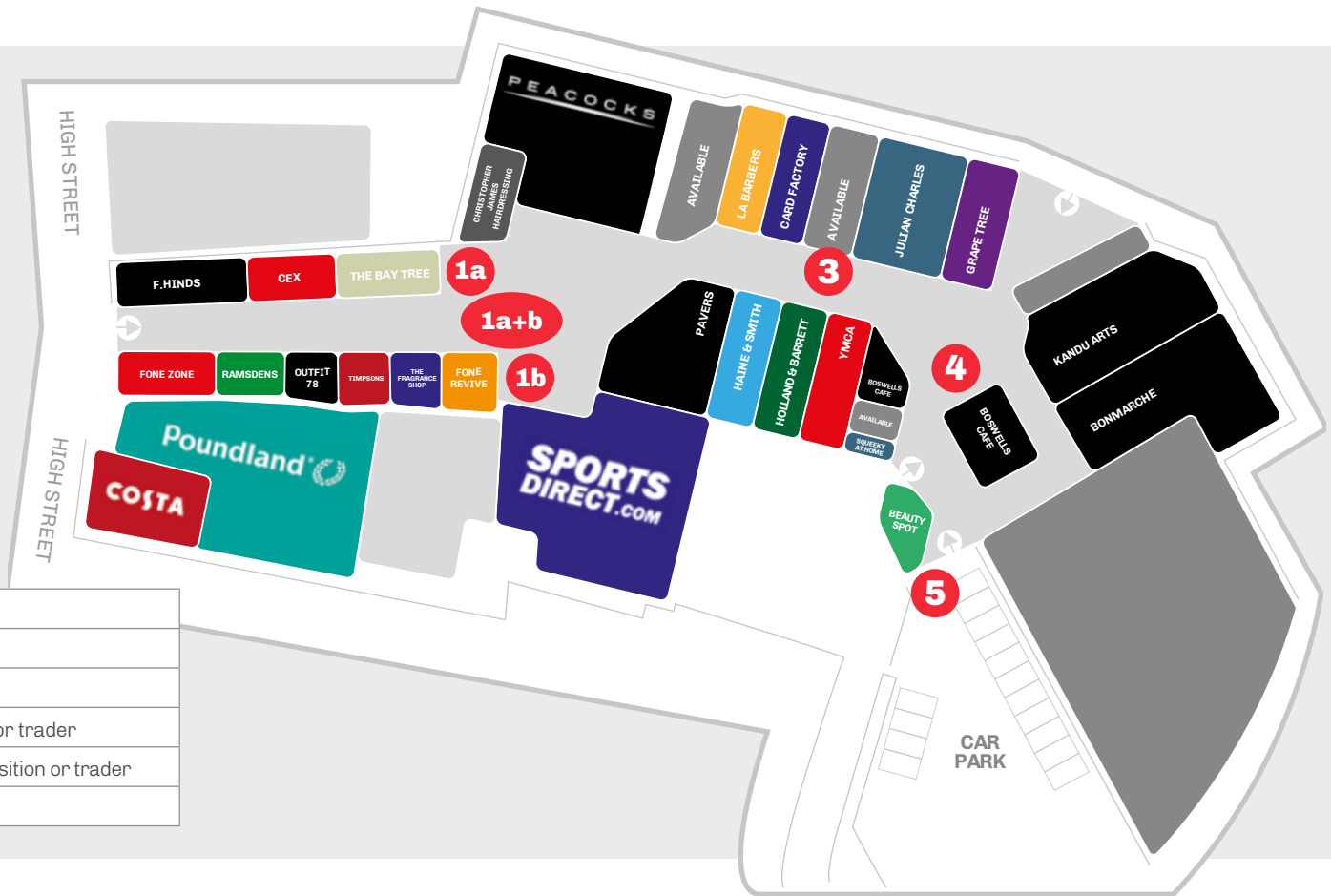
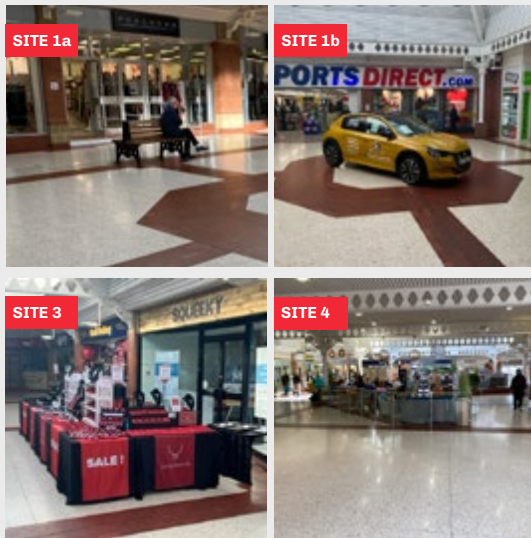
In addition to easy access from bus and train terminals, the rear of the shopping centre also offers access to a council-run upper and lower parking lot.

Anchored by Sports Direct, Poundland, Peacocks and Costa Coffee.



To book a promotional space at Emery Gate Shopping Centre please get in touch.
Call Access Point on **01704 544999**, email **emerygate@apuk.net** or visit **www.apuk.net**

Site Descriptions



Site 1a	Suitable for pop-up promotion
Site 1b	Suitable for pop-up promotion
Site 1a+b	Combined Atrium promotional area
Site 3	Mid-mall walkway - Suitable for data acquisition or trader
Site 4	Adjacent to Boswells Cafe - Suitable for data acquisition or trader
Site 5	External area - Ideal for street food vendor

To book a promotional space at Emery Gate Shopping Centre please get in touch.
 Call Access Point on **01704 544999**, email **emerygate@apuk.net** or visit **www.apuk.net**